



IBP ROBBERY-CONTROL SYSTEMS

raid-cam™ DVR

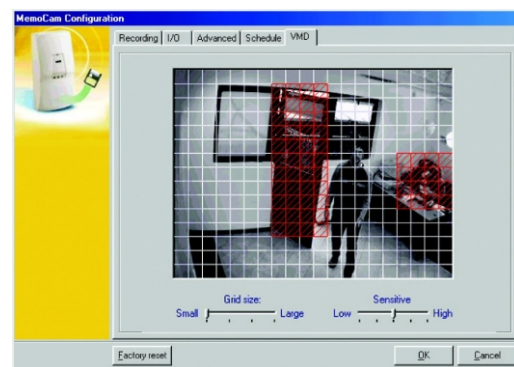
COVERT IMAGE CAPTURE

A compact, palm-size CCTV System that records and stores events on a removable Memory Card.

The **raid-cam™ DVR** automatically records events on the Memory Card following an alarm which can be activated by external triggers and/or by the internal VMD. The **raid-cam™ DVR** can be easily integrated into an existing CCTV system and the VMD enables the user to define specific areas of interest within the picture frame. The recorded events are easily analyzed by simply removing the Memory Card from the unit and inserting it into a Memory Card Reader connected to a PC. The remote control unit enables the user to Arm/Disarm the event recording process or record events manually and the Arm/Disarm function can be activated by external triggers.

Main Features

- 3 Video inputs for CCTV cameras
- 1 Video output for real time monitoring and camera adjustment
- Video Motion Detection (VMD)
- Stores up to 10,000 B/W images on MultiMedia Card (64MB)
- Weekly Scheduler
- Ultimate image quality
- Easy to install and user friendly
- IBP Police Evidence Pack included



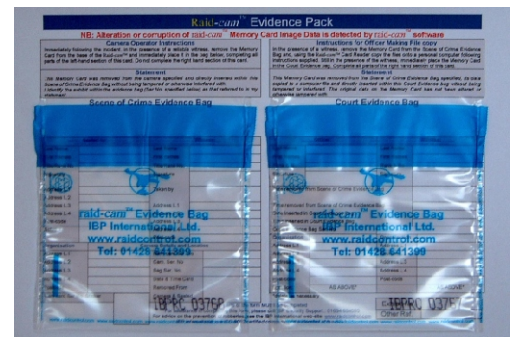
Video Motion Detection defining areas of interest

Benefits

The **raid-cam™ DVR** is a compact CCTV system that replaces the traditional VCR with external VMD.

- Adding 3 external cameras, converts the unit into a multiple camera CCTV system, significantly reducing the cost per video input
- The Video Output enables the user to view live video from a selected camera when connected to a CCTV monitor. This feature simplifies the camera adjustment process and provides additional monitoring capability
- The built-in weekly Scheduler enables the user to automatically Arm/Disarm the system at predefined times and days
- Simple automatic setup on the Memory Card defines the: image quality mode, camera visual parameters, frame rate and number of frames per event
- There are 2 recording modes:
 - Fixed - Records events until the Memory Card is full
 - Cyclic - Records events successively, overriding old data when the Memory Card is full
- Image integrity - each image is digitally signed and can be authenticated
- The 3 colour-coded LEDs indicate the status of the unit

IBP Police Evidence Pack



Datasheet



IBP-Group Ltd
 Osprey House, 51a Lion Lane, Haslemere, GU27 1JF
 Telephone - 01428 641399 Fax - 01428 642235
 Email - info@ibp-group.com



raid-cam™ DVR

Video Inputs	3 (for external cameras)
Video Output	1 (for adjustment & monitoring)
Dry contact input	3 (for external triggers)
Relay Output	2
Internal VMD	Yes
Weekly Scheduler	Yes
Removable MMC type	16 std, 32, 64, 128, 256 MB storage
Compression Format	JPEG
Recording Quality	Good, Great, Better, Best
Image Size	5-20 KB / Image
Recording Rates	From 3 images / second to 1 image / 5 minutes
No of images per event	1 to 101 images
Current Consumption	Typical -400mA @ 12 VDC
Unit Dimensions (mm)	67 x 135 x 56 (W x H x D)
Weight	250g

System Diagram

